

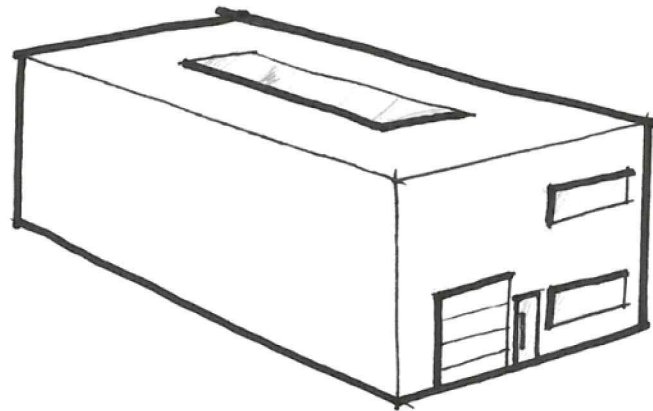
# Raghenopark Mechelen - nieuwe KMO units

22/10/2015



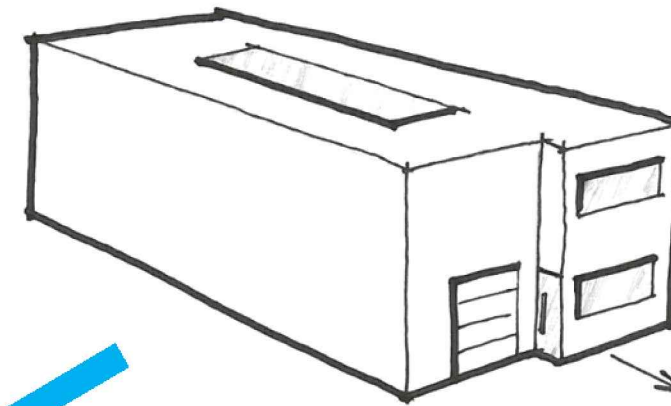






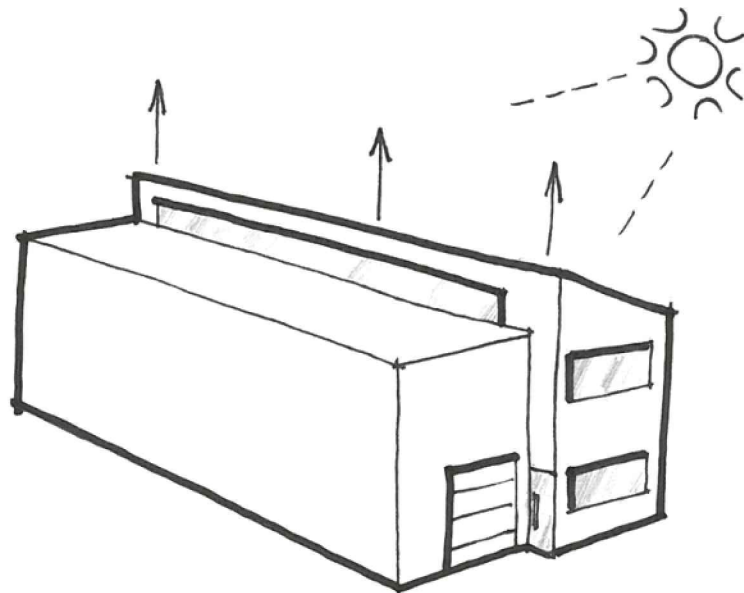
## 1 Programma

- 30x12 = 360m<sup>2</sup>
- Poort + inkomdeur
- Raam op +0 en +1
- Daklicht (RWA)



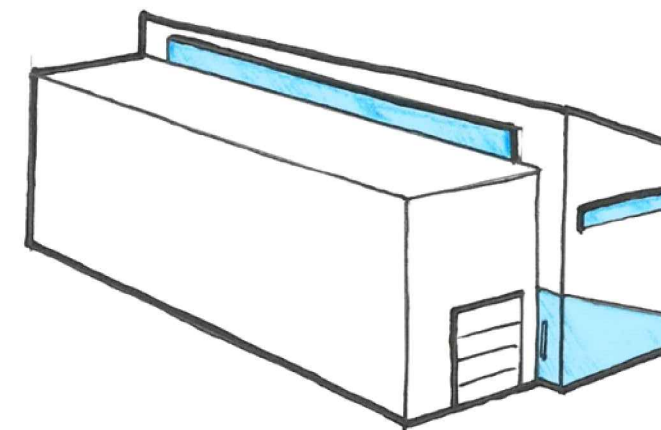
## 2 Uitsprong

- Accentuering inkom
- Visueel onderscheid kantoren
- Doorbreking monotomie gevels
- Firmanaam



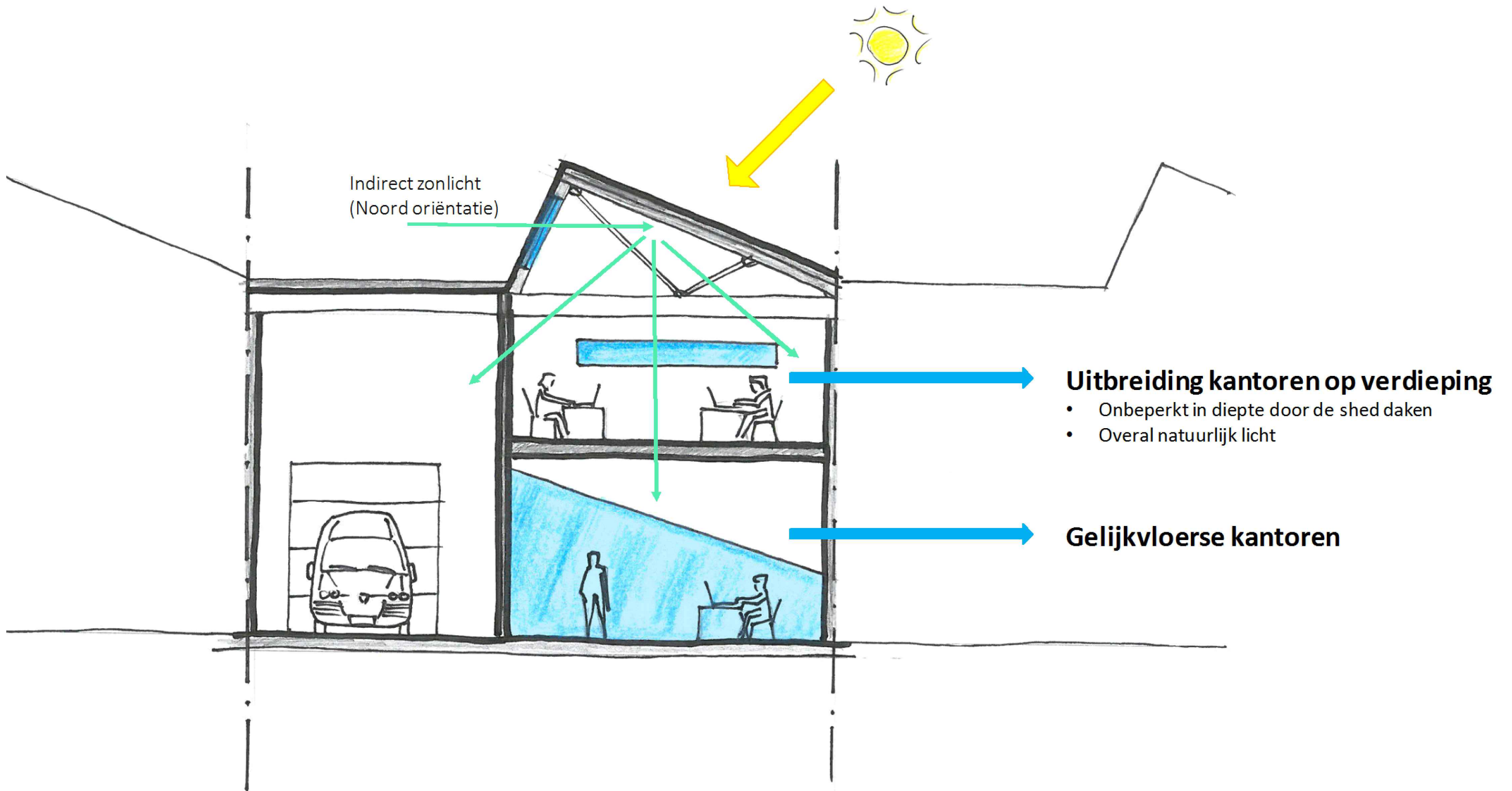
## 3 Shed dak

- Indirect zonlicht
- Flexibiliteit kantoren
- Integratie RWA



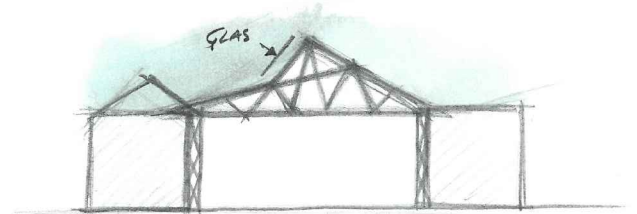
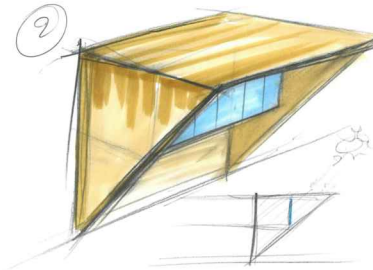
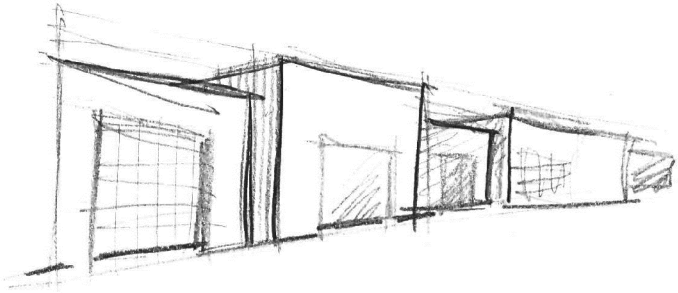
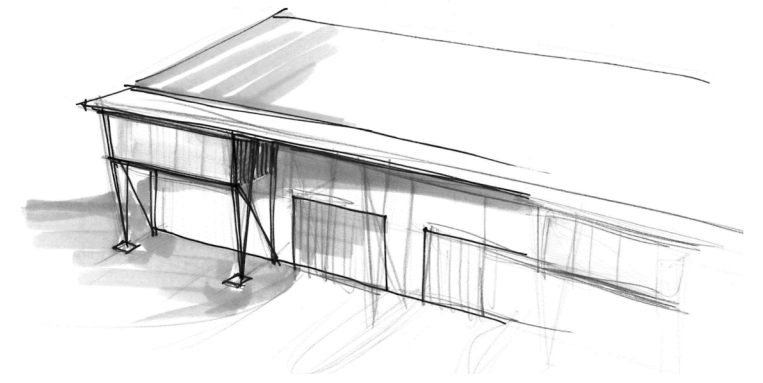
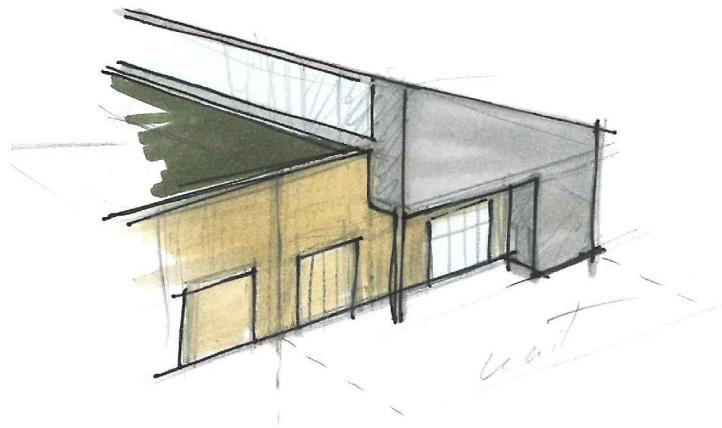
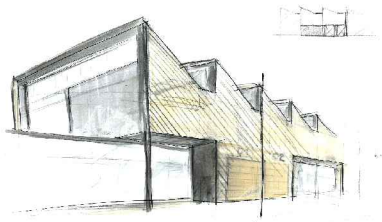
## 4 Individualiteit

- Herkenbaarheid individuele units
- Dynamiek door lijnenspel

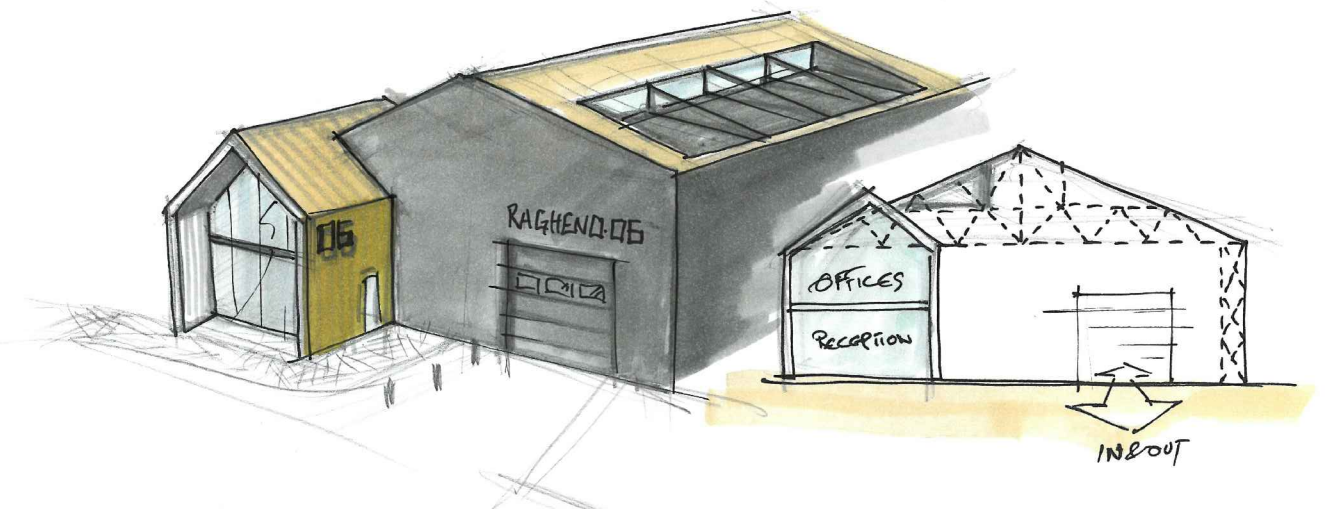
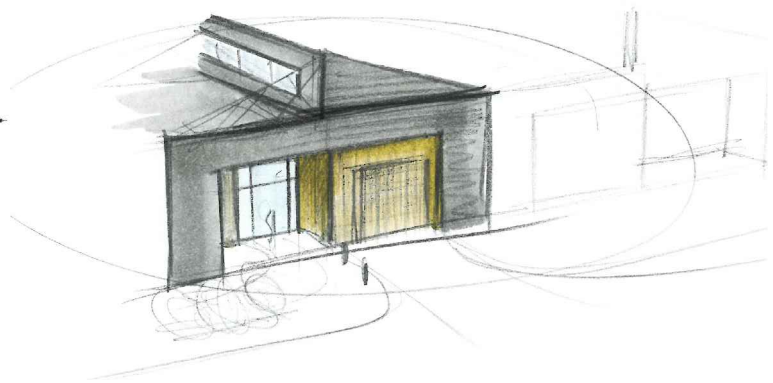
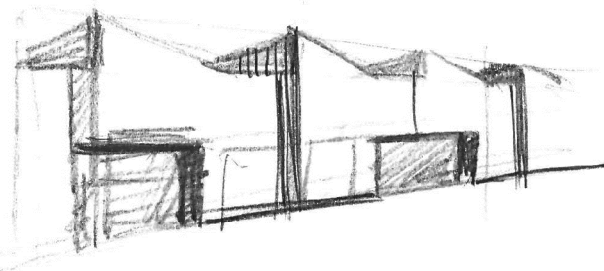




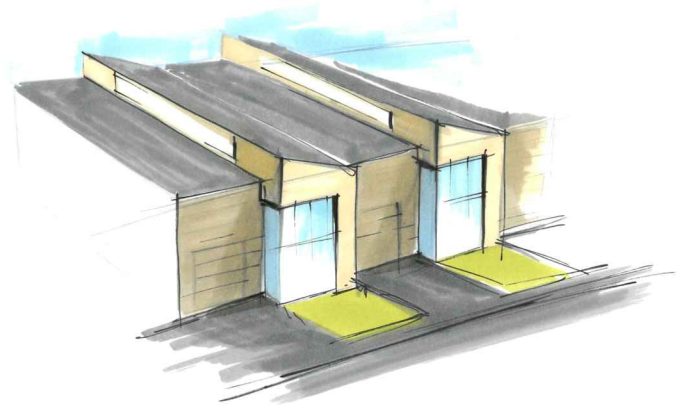
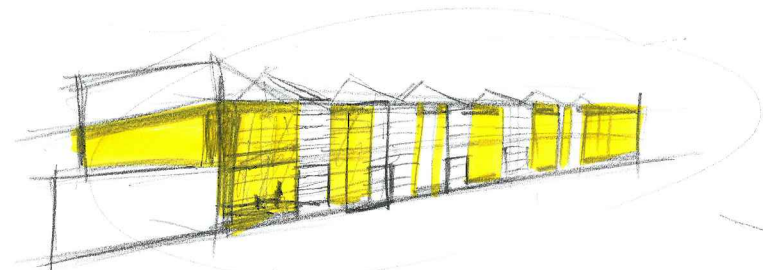
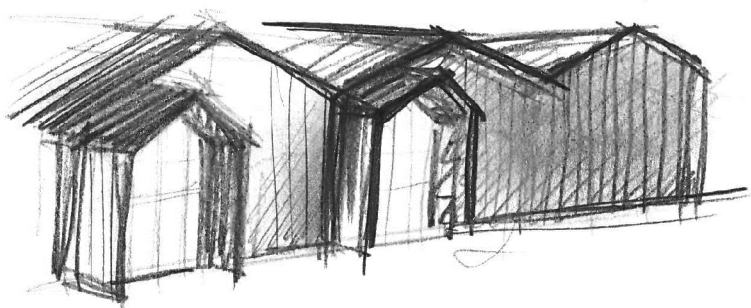
A



2



3





- Bouwprogramma:  $5.330 + 3.130 + (3 \times 870) = \pm 11.000\text{m}^2$
- nieuwe parkings: 140 boven- en 70 ondergronds (deel daarvan wordt benut door bestaande kantoren)
- V/t index: 0,58
- Bebouwde oppervlakte: 49%
- Groenoppervlakte 14%





