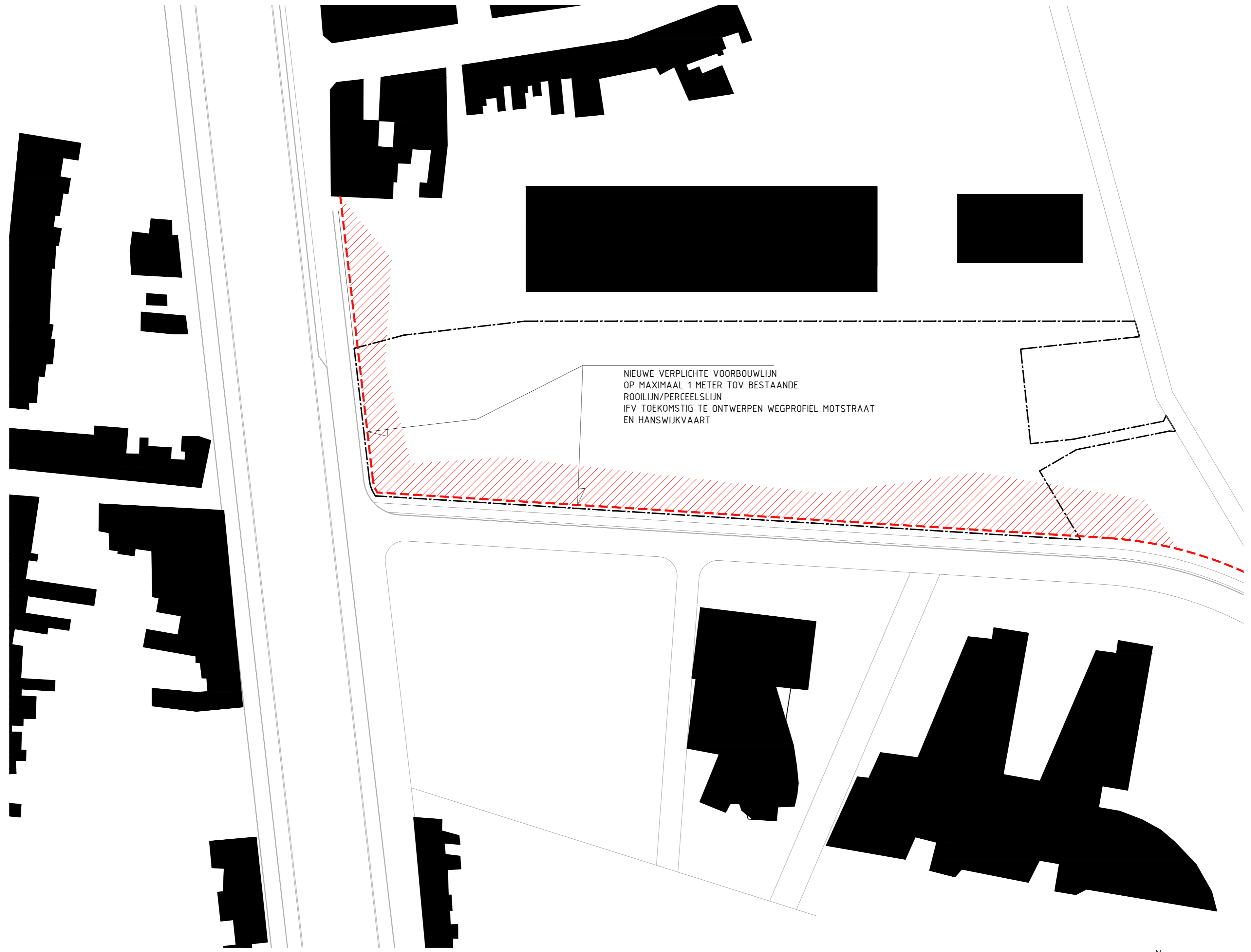
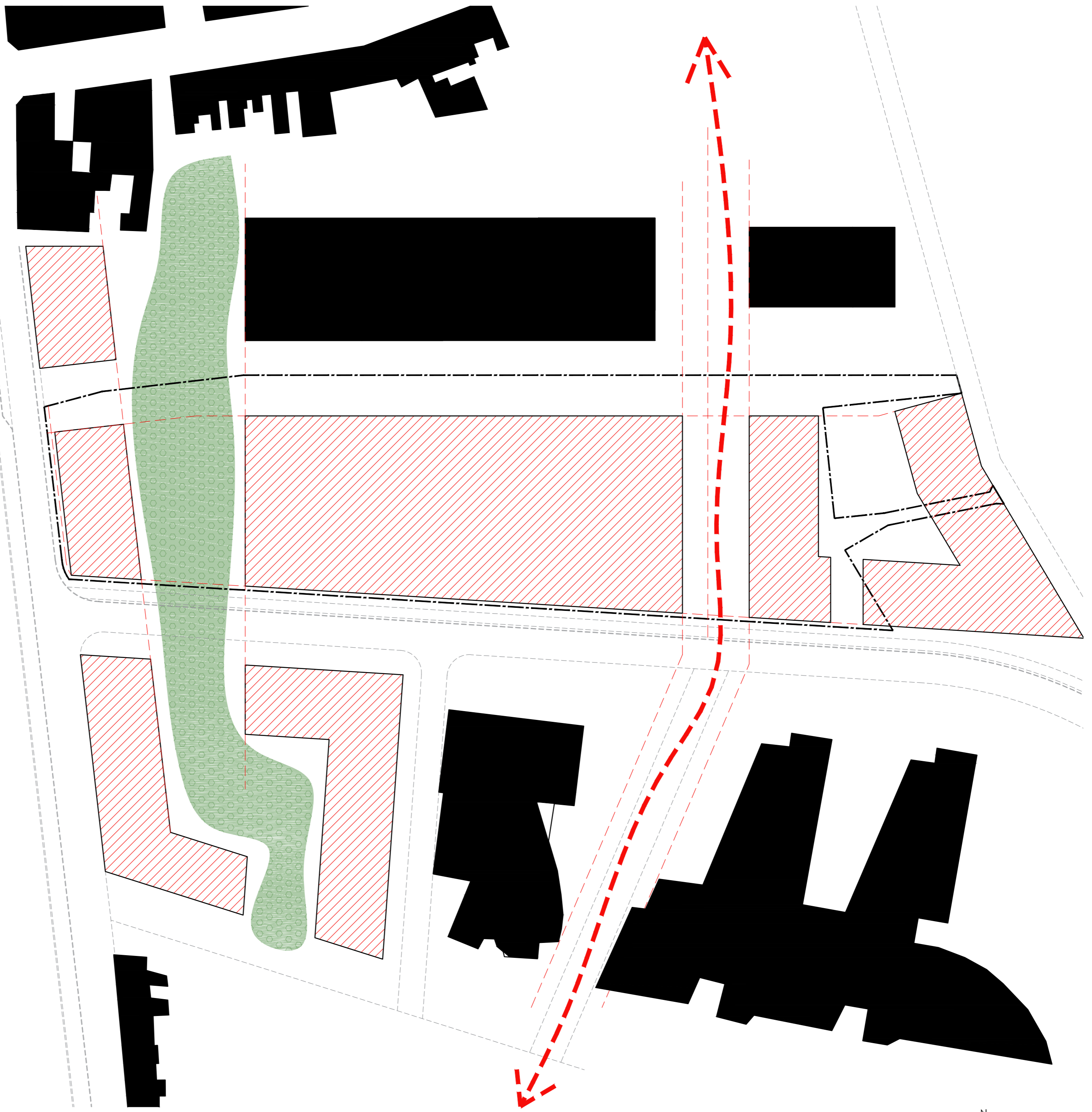
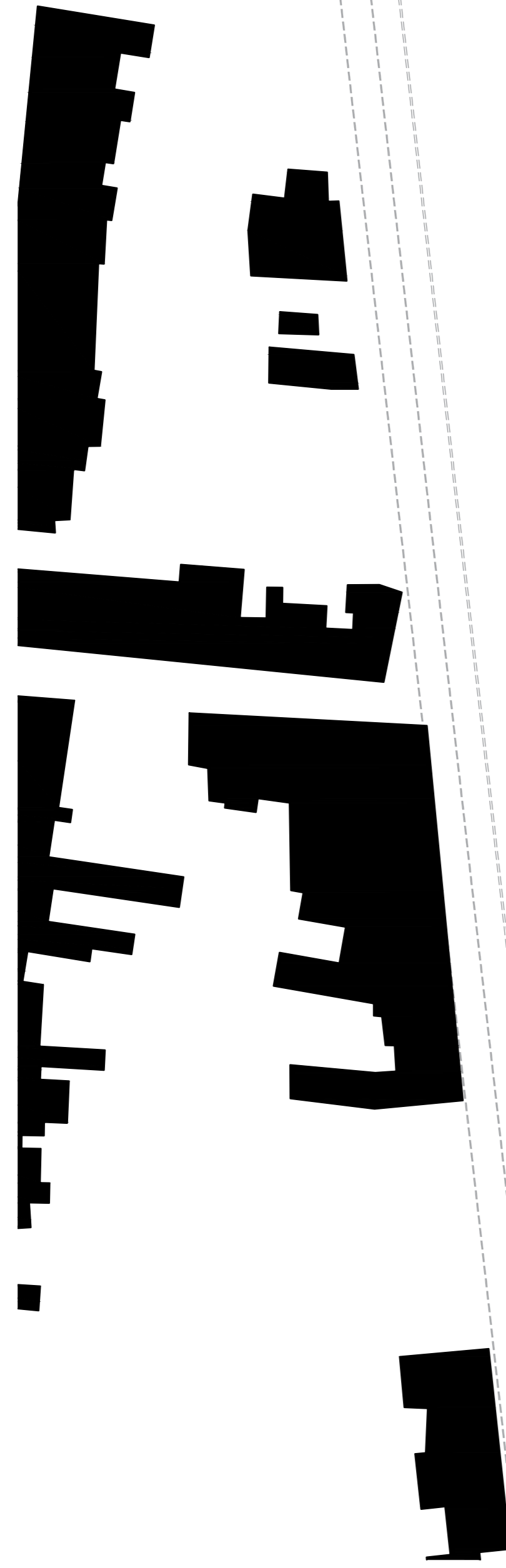




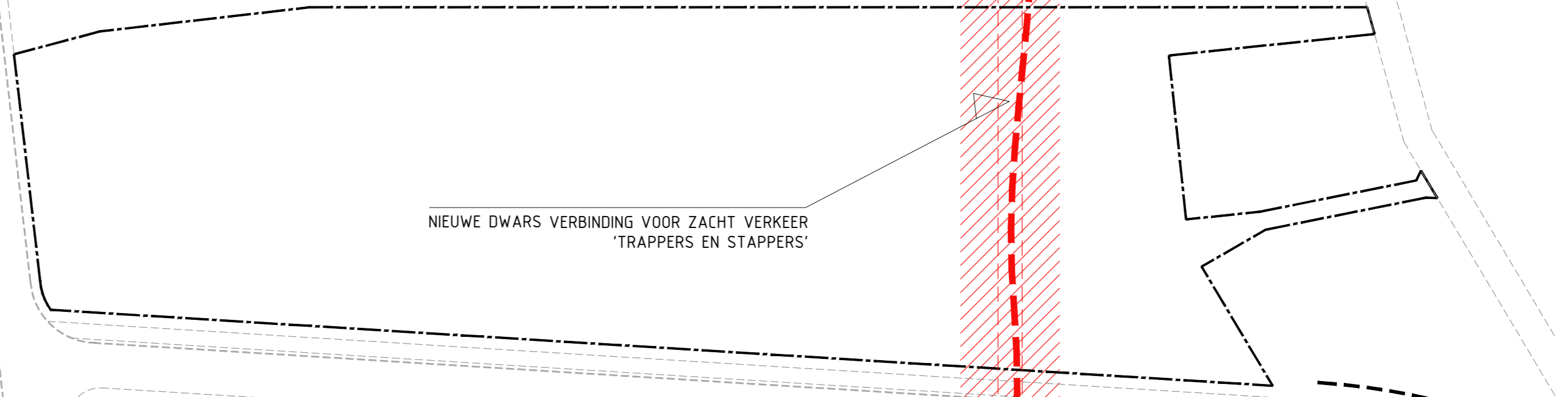
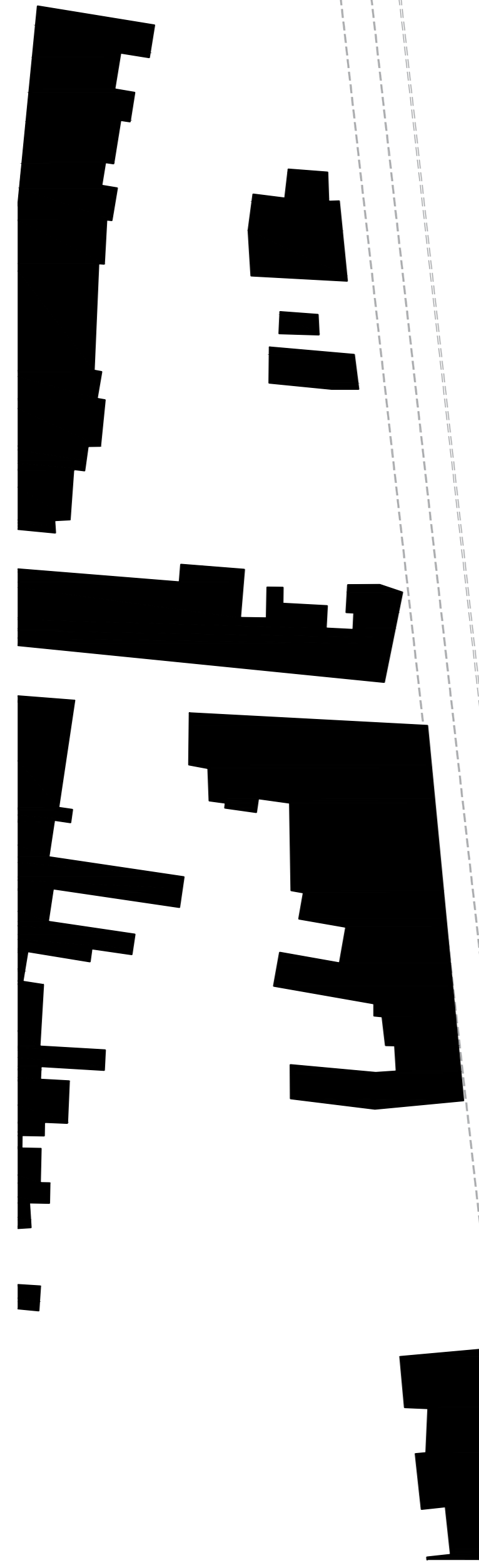
BESTAANDE KANTOORGEBOUW OP  
TERMIJN AFBREKEN IFV NIEUWE  
STEDELIJKE ONTWIKKELING

BESTAANDE VERLOEDERDE  
RIJWONINGEN OPKOPEN EN  
AFBREKEN IFV NIEUWE  
STEDELIJKE ONTWIKKELING

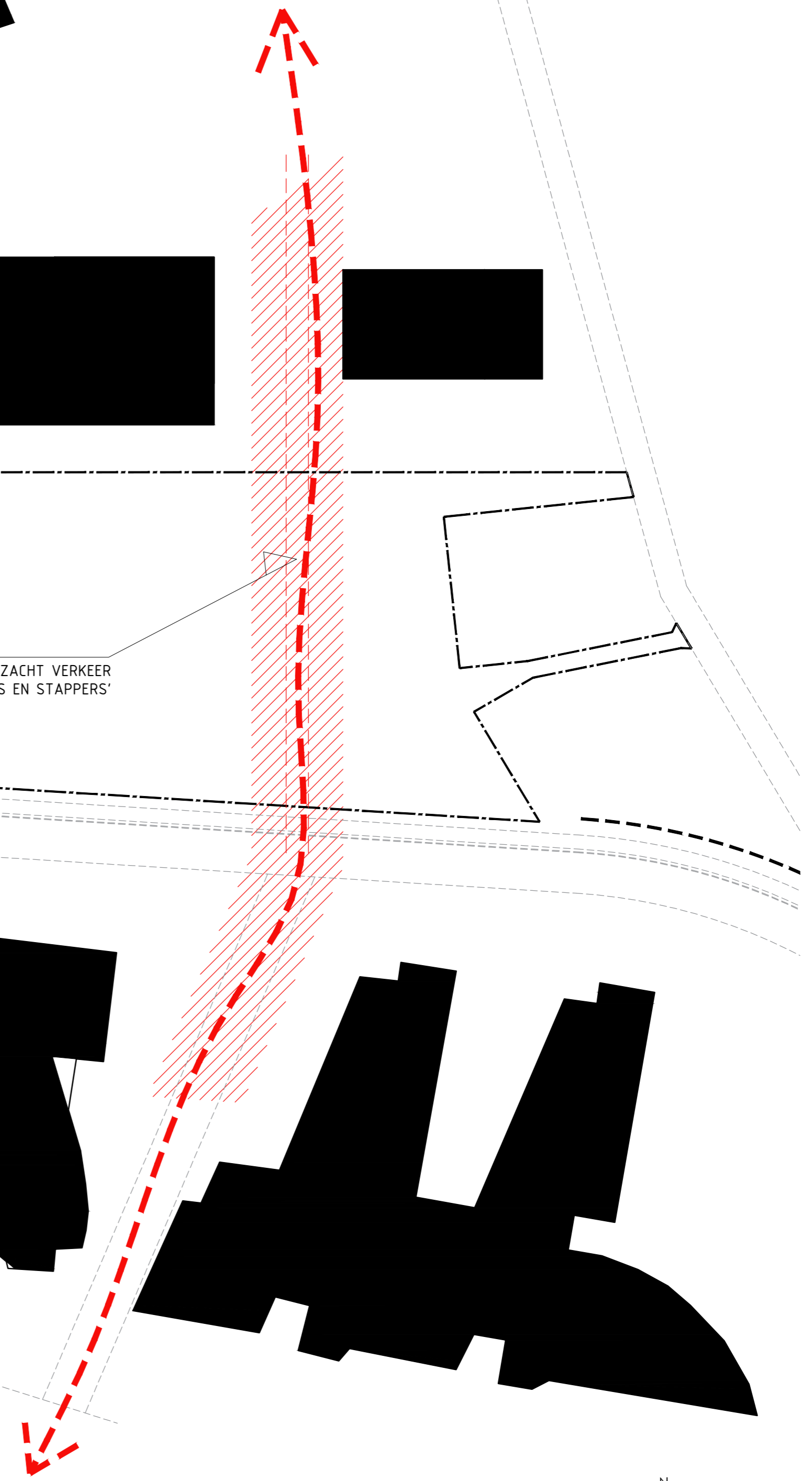
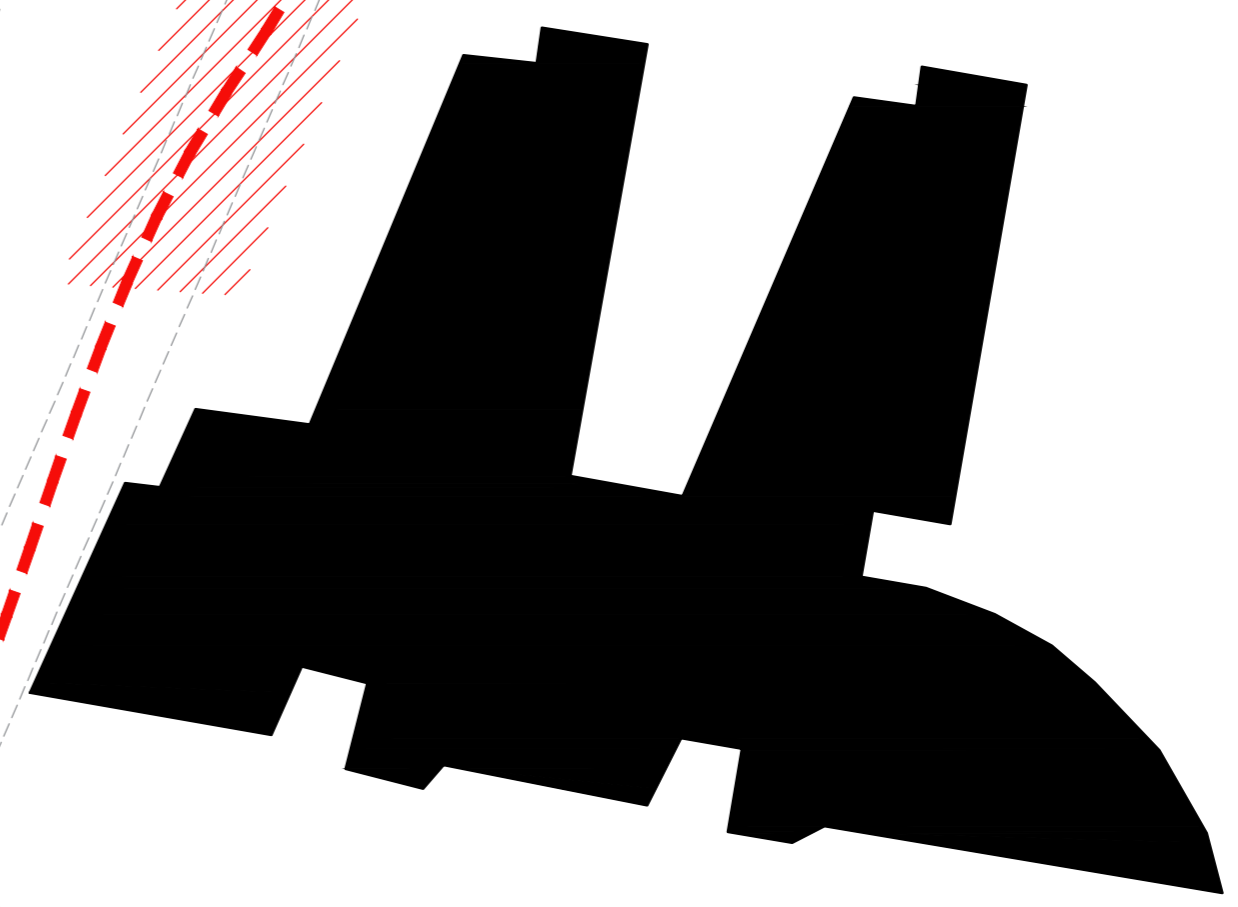
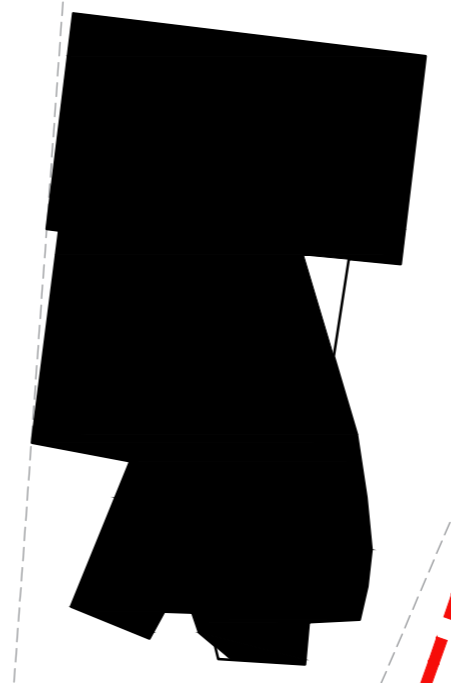


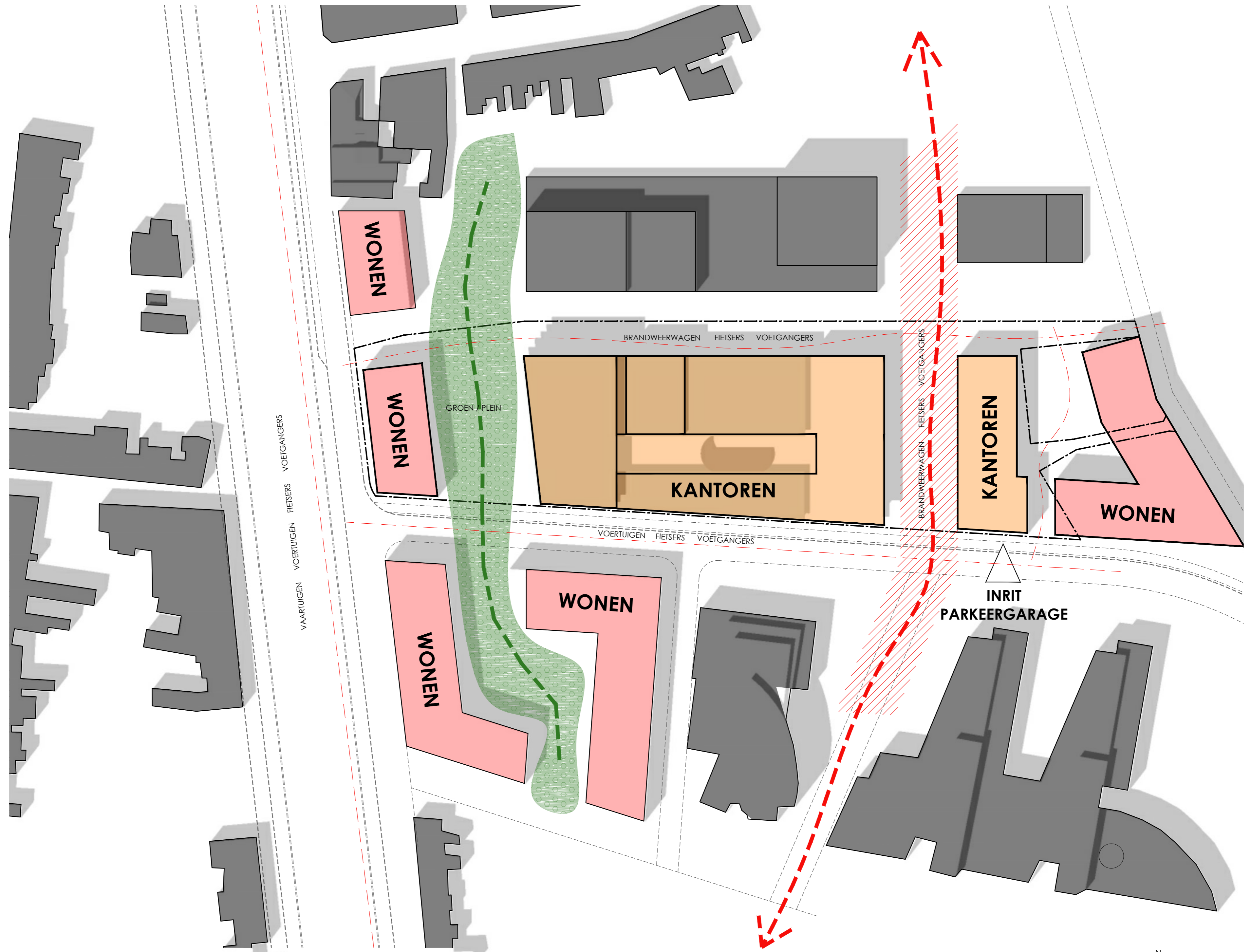


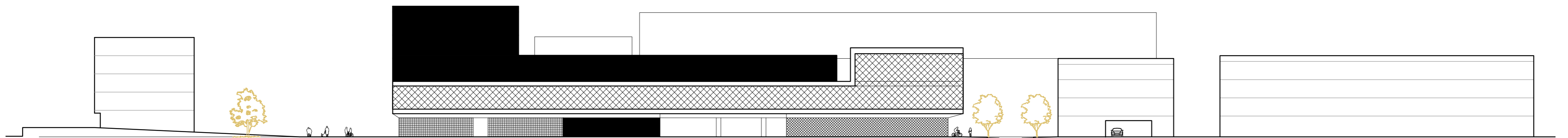




NIEUWE DWARS VERBINDING VOOR ZACHT VERKEER  
'TRAPPERS EN STAPPERS'





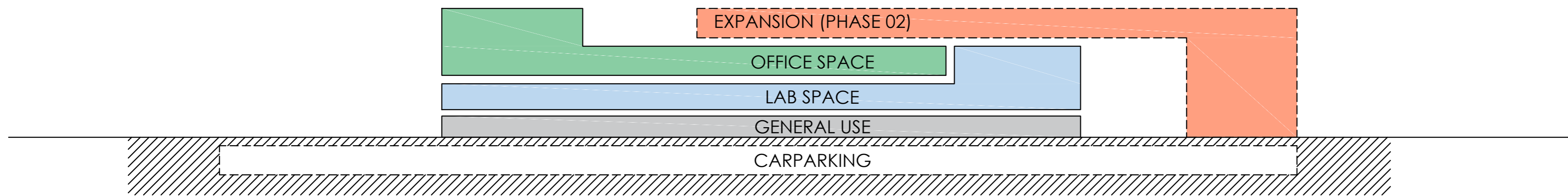


00 m      20 m

**STREET ELEVATION (MOTSTRAAT, MECHELEN)**

**beherman**group    ddrarchitects

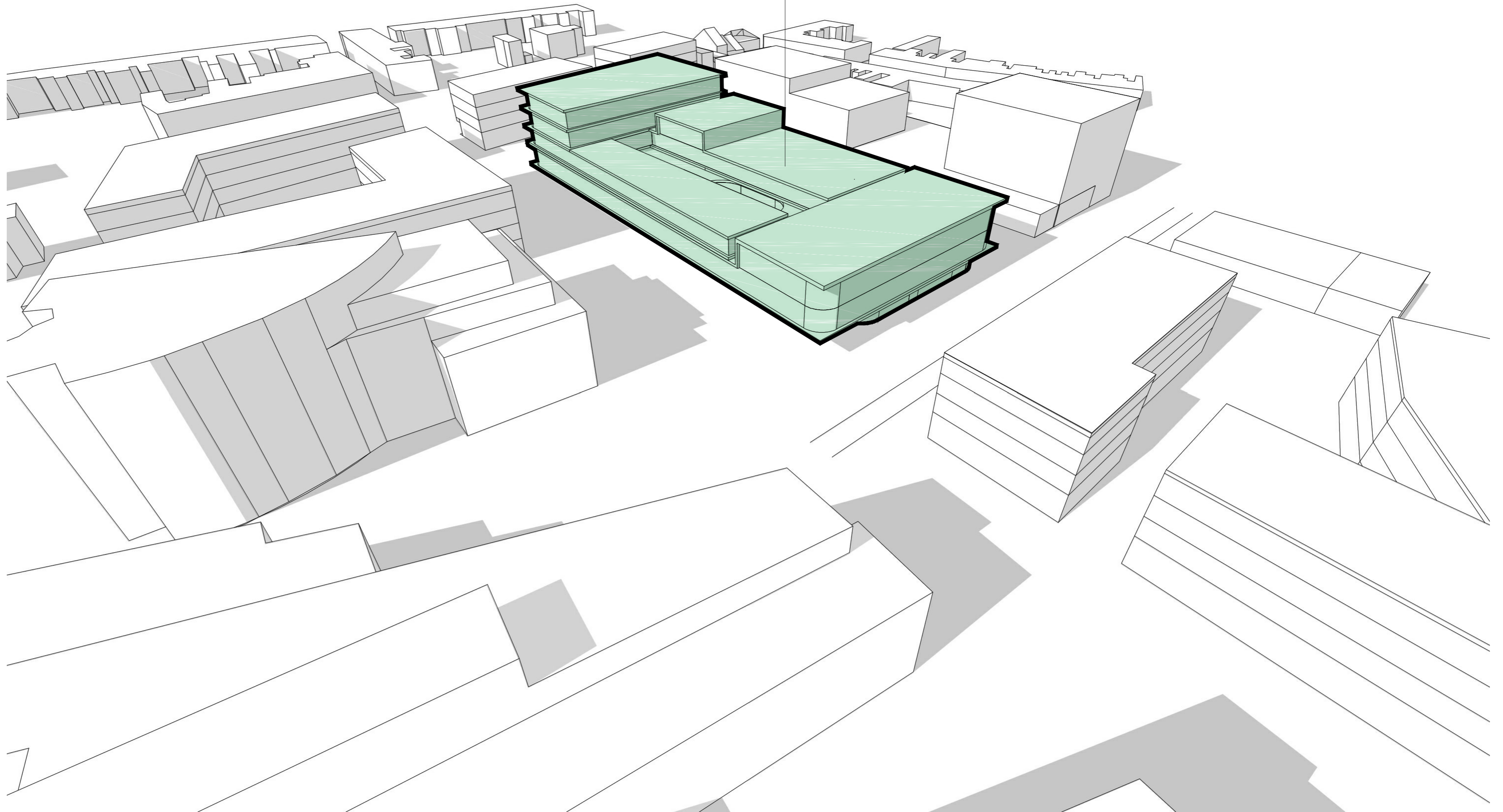
NOTE: THESE DRAWINGS ARE GRAPHICAL REPRESENTATIONS (ORGANIGRAMS) & CONCEPT OF A POSSIBLE LAYOUTS AND SURFACES. THEY ARE NOT TO BE CONFUSED WITH FINAL ARCHITECTURAL GROUNDPLANS. SHIFTS AND CHANGES ARE TO BE EXPECTED ACCORDING TO CLIENT NEEDS AND ARCHITECTURAL DESIGN AND FINETUNING.



**VERTICAL CONCEPT DIAGRAM**



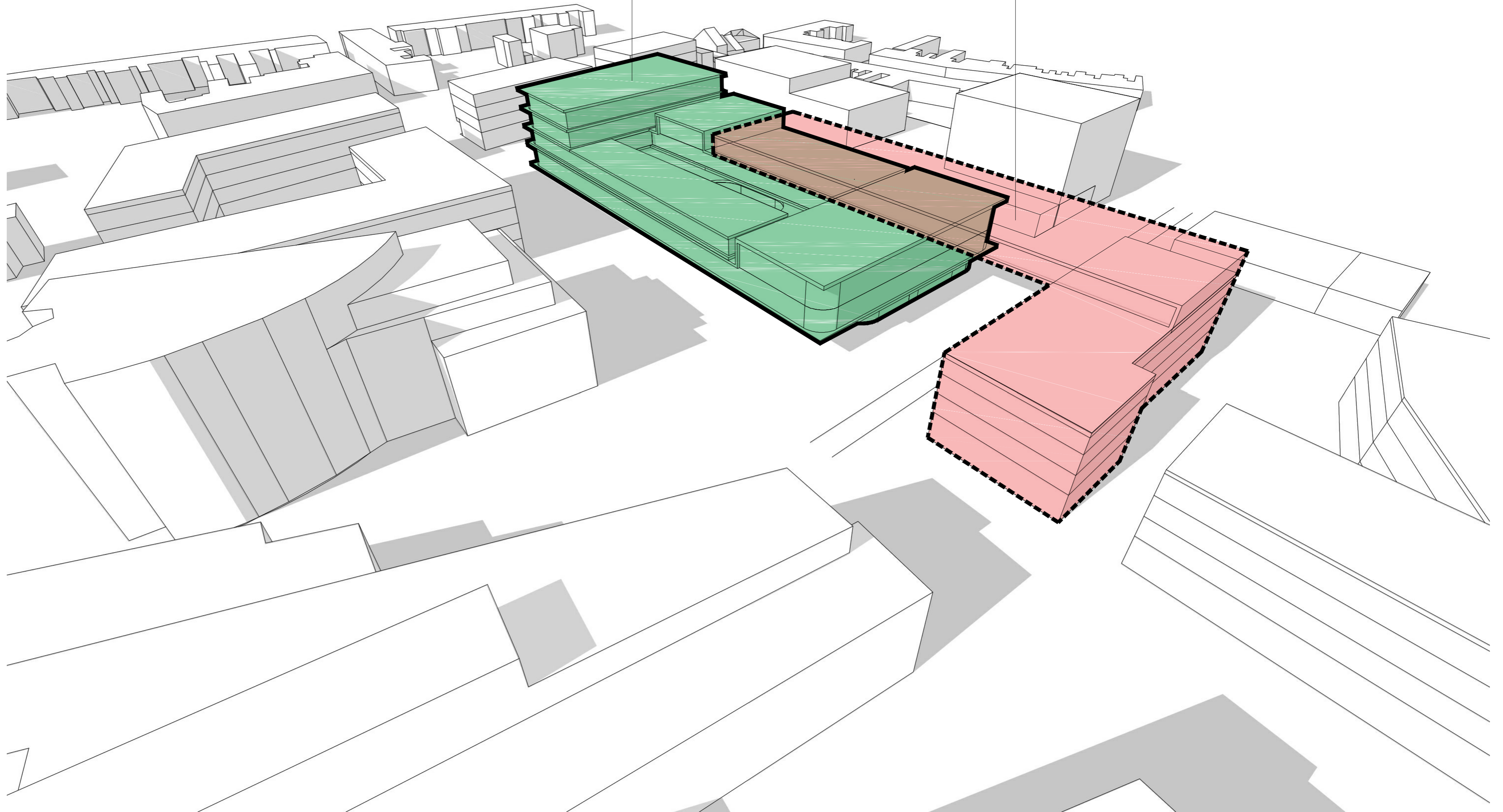
NEW OFFICE BUILDING  
GALAPAGOS

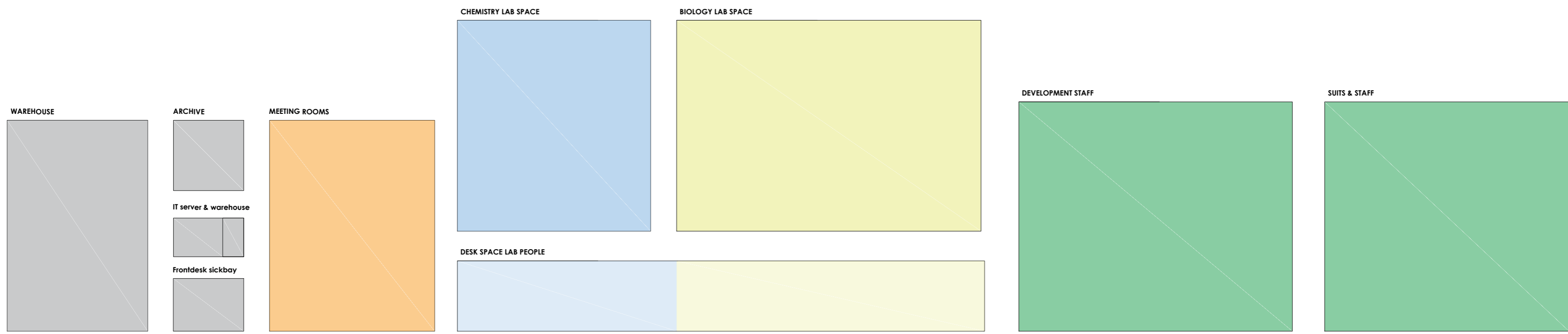


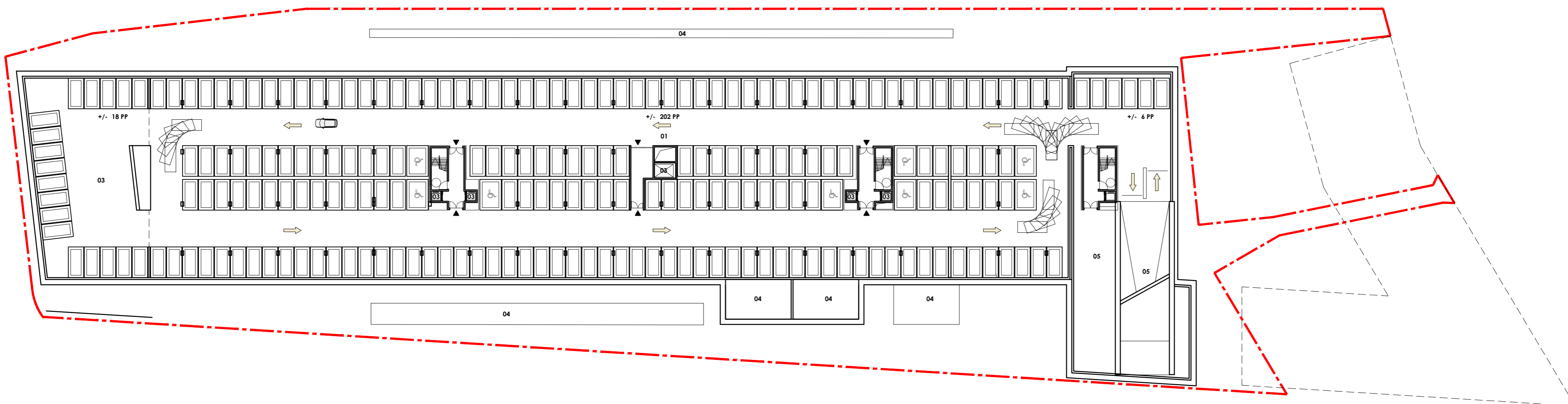


PHASE 01  
GALAPAGOS

PHASE 02  
POSSIBLE EXPANSION  
GALAPAGOS  
according to need



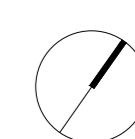




00 m      20 m

- 01 GENERAL CARPARKING
- 02 PRIVATE CARPARKING
- 03 ELEVATORS
- 04 SEWAGE / RAINWATER / ...
- 05 TECHNICAL SPACE

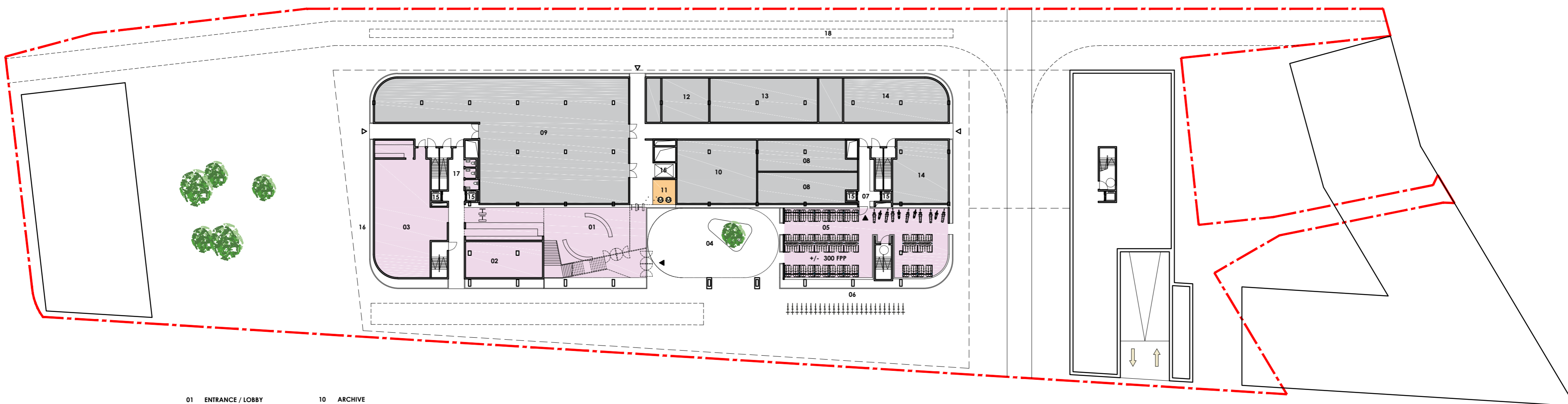
**LEVEL -1 / CAR PARKING**



**beherman**group    ddrarchitects

NOTE: THESE DRAWINGS ARE GRAPHICAL REPRESENTATIONS (ORGANIGRAMS) & CONCEPT OF A POSSIBLE LAYOUTS AND SURFACES. THEY ARE NOT TO BE CONFUSED WITH FINAL ARCHITECTURAL GROUNDPLANS. SHIFTS AND CHANGES ARE TO BE EXPECTED ACCORDING TO CLIENT NEEDS AND ARCHITECTURAL DESIGN AND FINETUNING.

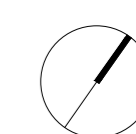




- |                             |                              |
|-----------------------------|------------------------------|
| 01 ENTRANCE / LOBBY         | 10 ARCHIVE                   |
| 02 FRONTDESK & SICKBAY      | 11 MEETING SPACE             |
| 03 CAFE / REFECTORY         | 12 IT SERVERROOM & WAREHOUSE |
| 04 COURTYARD                | 13 WASTE ROOMS               |
| 05 BIKES & OTHER (LOCKED)   | 14 TECHNICAL SPACE           |
| 06 BIKES VISITORS (COVERED) | 15 ELEVATOR                  |
| 07 SIDE ENTRANCE            | 16 OUTDOOR TERRACE           |
| 08 LOCKERROOM & SHOWER      | 17 SANITARY                  |
| 09 WAREHOUSE                | 18 FIRETRUCK ROAD / DELIVERY |

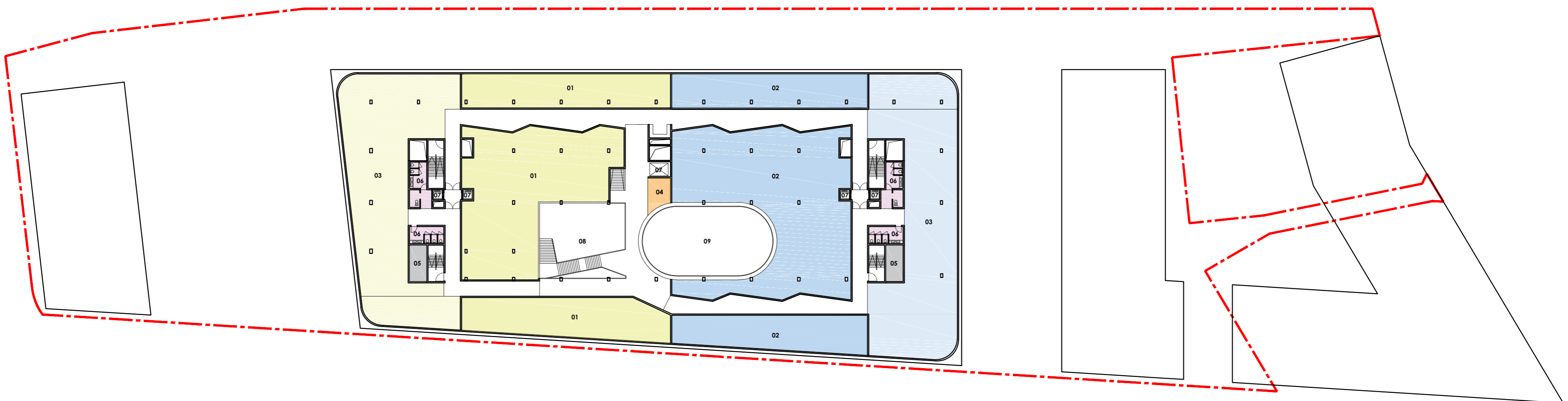
00 m      20 m

**LEVEL 0 / GENERAL USE**



**beherman**group    ddrarchitects

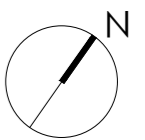
NOTE: THESE DRAWINGS ARE GRAPHICAL REPRESENTATIONS (ORGANIGRAMS) & CONCEPT OF A POSSIBLE LAYOUTS AND SURFACES. THEY ARE NOT TO BE CONFUSED WITH FINAL ARCHITECTURAL GROUNDPLANS. SHIFTS AND CHANGES ARE TO BE EXPECTED ACCORDING TO CLIENT NEEDS AND ARCHITECTURAL DESIGN AND FINETUNING.



00 m      20 m

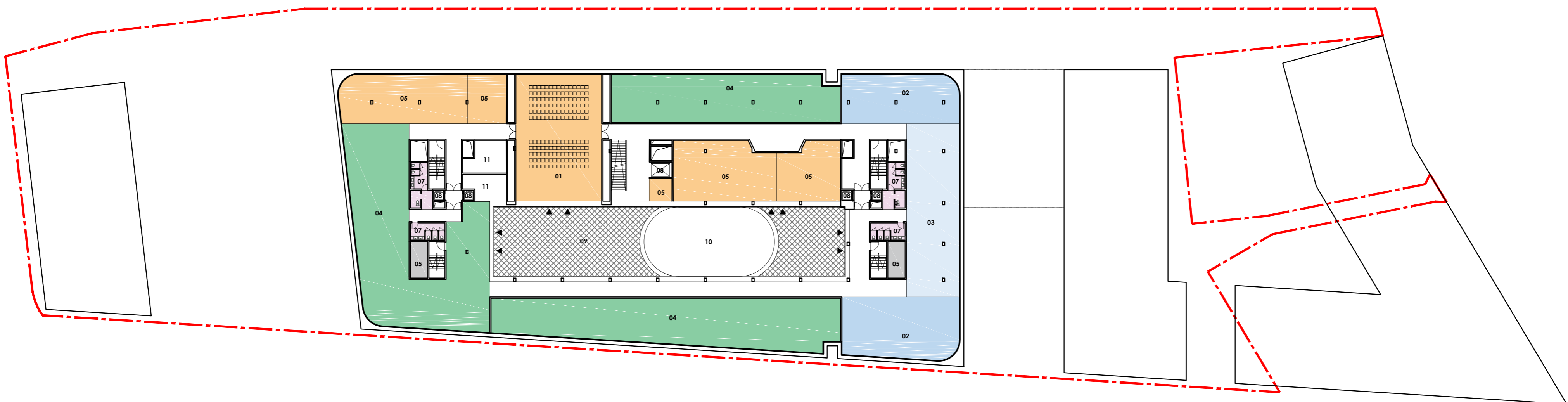
- |                              |                    |
|------------------------------|--------------------|
| 01 CHEMISTRY LAB SPACE       | 05 TECHNICAL SPACE |
| 02 IN VITRO BIOLOGY LAB SP.  | 06 SANITARY        |
| 03 DESK SPACE LAB PEOPLE     | 07 ELEVATOR        |
| 03 DESK SPACE TLs/TA/CC&B/IS | 08 VOID / ATRIUM   |
| 03 DESK SPACE SEN. RESEARCH  | 09 VOID OUTDOOR    |
| 04 MEETING SPACE             |                    |

**LEVEL +1 (+4m80) / LAB SPACE**



**beherman**group ddrarchitects

NOTE: THESE DRAWINGS ARE GRAPHICAL REPRESENTATIONS (ORGANIGRAMS) & CONCEPT OF A POSSIBLE LAYOUTS AND SURFACES. THEY ARE NOT TO BE CONFUSED WITH FINAL ARCHITECTURAL GROUNDPLANS. SHIFTS AND CHANGES ARE TO BE EXPECTED ACCORDING TO CLIENT NEEDS AND ARCHITECTURAL DESIGN AND FINETUNING.



00 m 20 m

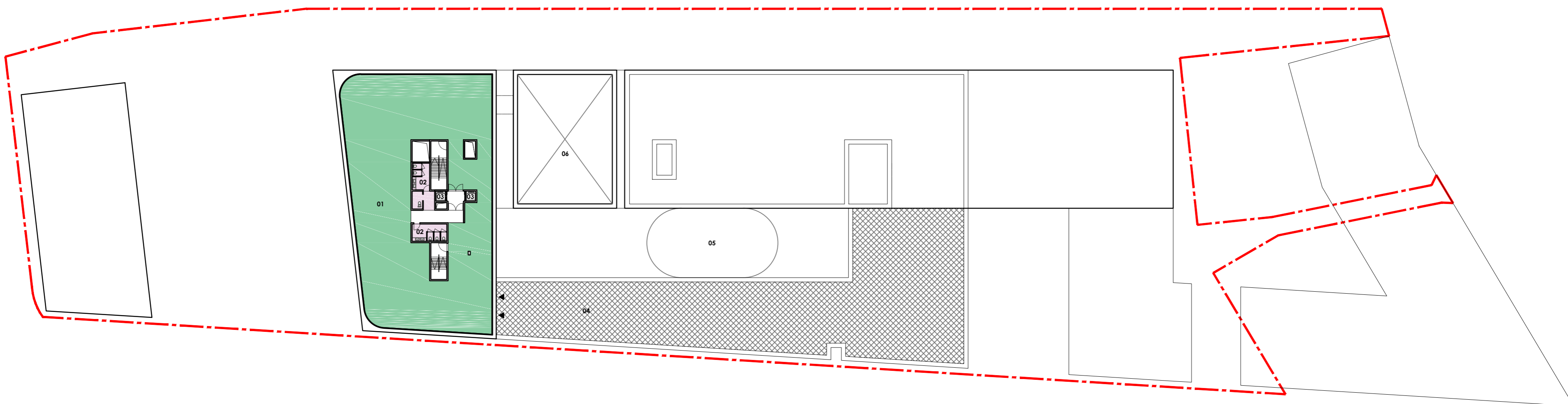
- |                              |                     |
|------------------------------|---------------------|
| 01 MULTI PURPOSE AUDITORIUM  | 06 TECHNICAL SPACE  |
| 02 IN VITRO BIOLOGGY LAB SP. | 07 SANITARY         |
| 03 DESK SPACE LAB PEOPLE     | 08 ELEVATOR         |
| 03 DESK SPACE TLS/TA/CC&B/IS | 08 EXTERIOR TERRACE |
| 03 DESK SPACE SEN. RESEARCH  | 09 VOID / ATRIUM    |
| 04 OFFICE SPACE              | 10 VOID OUTDOOR     |
| 04 DEVELOPMENT STAFF         | 11 UNDEFINED        |
| 05 MEETING SPACE / ROOM      |                     |

LEVEL +2 (+9m60) / STAFF & MEETING



**beherman**group ddrarchitects

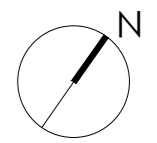
NOTE: THESE DRAWINGS ARE GRAPHICAL REPRESENTATIONS (ORGANIGRAMS) & CONCEPT OF A POSSIBLE LAYOUTS AND SURFACES. THEY ARE NOT TO BE CONFUSED WITH FINAL ARCHITECTURAL GROUNDPLANS. SHIFTS AND CHANGES ARE TO BE EXPECTED ACCORDING TO CLIENT NEEDS AND ARCHITECTURAL DESIGN AND FINETUNING.



- 01 OFFICE SPACE
- 02 SANITARY
- 03 ELEVATOR
- 04 EXTERIOR TERRACE
- 05 VOID OUTDOOR
- 06 DOUBLE HEIGHT / VOID

00 m      20 m

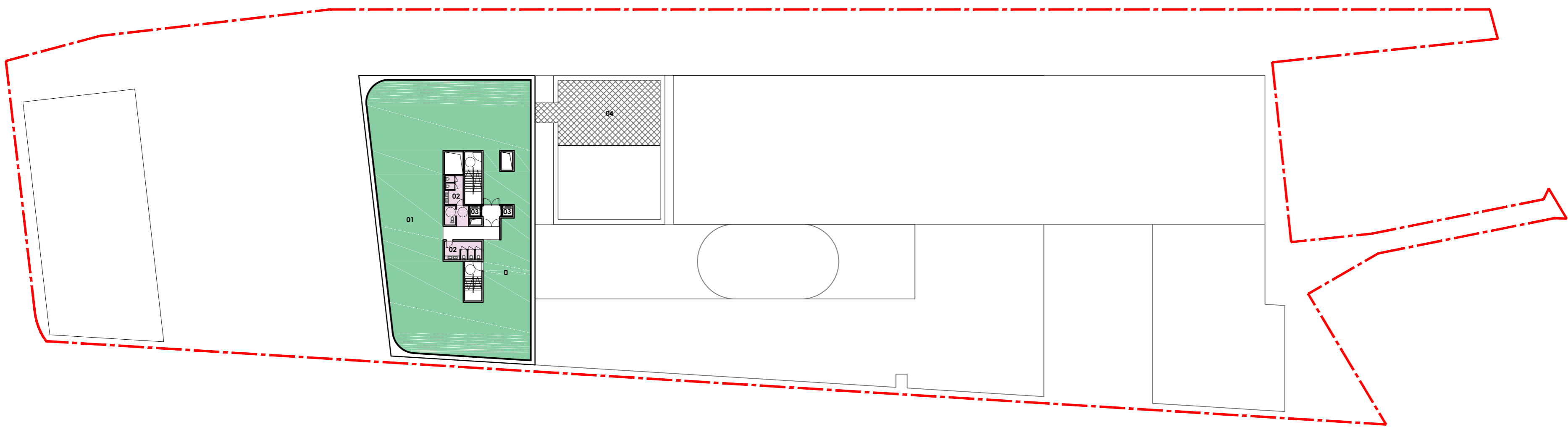
**LEVEL +3 (+13m60) / OFFICE SPACE**



**beherman**group    ddrarchitects

NOTE: THESE DRAWINGS ARE GRAPHICAL REPRESENTATIONS (ORGANIGRAMS) & CONCEPT OF A POSSIBLE LAYOUTS AND SURFACES. THEY ARE NOT TO BE CONFUSED WITH FINAL ARCHITECTURAL GROUNDPLANS. SHIFTS AND CHANGES ARE TO BE EXPECTED ACCORDING TO CLIENT NEEDS AND ARCHITECTURAL DESIGN AND FINETUNING.

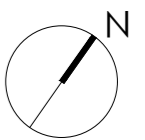




00 m      20 m

- 01 OFFICE SPACE
- 02 SANITARY
- 03 ELEVATOR
- 04 EXTERIOR TERRACE

**LEVEL +4 (+17m60) / OFFICE SPACE & CEO**



NETTO	requested		total	N+0	N+1	N+2	N+3	N+4
	GALAPAGOS		9109 m <sup>2</sup>	2180 m <sup>2</sup>	3042 m <sup>2</sup>	2687 m <sup>2</sup>	600 m <sup>2</sup>	600 m <sup>2</sup>
warehouse	600 m <sup>2</sup>	755 m <sup>2</sup>	816 m <sup>2</sup>	613 m <sup>2</sup>				
archive	100 m <sup>2</sup>			133 m <sup>2</sup>				
IT serverroom & warehouse	55 m <sup>2</sup>			70 m <sup>2</sup>				
waste rooms				125 m <sup>2</sup>				
meeting rooms	700 m <sup>2</sup>		794 m <sup>2</sup>			455 m <sup>2</sup>		
meeting space				15 m <sup>2</sup>	18 m <sup>2</sup>	14 m <sup>2</sup>		
multi-purpose auditorium						292 m <sup>2</sup>		
frontdesk & sickbay	75 m <sup>2</sup>			75 m <sup>2</sup>				
technical space				120 m <sup>2</sup>	34 m <sup>2</sup>	34 m <sup>2</sup>		
technical space				28 m <sup>2</sup>				
technical space				91 m <sup>2</sup>				
parking for bikes etc				275 m <sup>2</sup>				
entrance & reception				260 m <sup>2</sup>				
cafe/refectory & kichenette				211 m <sup>2</sup>				
toilets				10 m <sup>2</sup>	77 m <sup>2</sup>	77 m <sup>2</sup>		
lockers and showers				154 m <sup>2</sup>				
chemistry lab space	825 m <sup>2</sup>	3421 m <sup>2</sup>	3512 m <sup>2</sup>		868 m <sup>2</sup>			
in vitro biology lab space	1300 m <sup>2</sup>				970 m <sup>2</sup>	354 m <sup>2</sup>		
desk space lab people	768 m <sup>2</sup>				1075 m <sup>2</sup>	245 m <sup>2</sup>		
desk space Tls/TA/CC&B/IS	330 m <sup>2</sup>							
desk space senior research staff	198 m <sup>2</sup>							
office space	1145 m <sup>2</sup>	2415 m <sup>2</sup>	2416 m <sup>2</sup>				600 m <sup>2</sup>	600 m <sup>2</sup>
development staff	1270 m <sup>2</sup>					1216 m <sup>2</sup>		
carparking								
carparking disabled		+/- 8						
carparking		+/- 194						
bikeparking								
bicycles (2 level storage) (locked)		+/- 285						
motorcycles & other (locked)		+/- 15						
bicycles visitors		+/- 25						